

EC-Fans

Smart Way to Handle the Air



WIDE RANGE, RELIABILITY, EFFICIENCY



CLEAN AIR – FOR YOU

Geovent A/S has a **wide range**, of **EC-fans** for multiple types of application

DUCT FANS:

- › Rectangular or round connection
- › Airflow up to 15.900 m³/h
- › High-efficiency EC-fans

ROOF FANS:

- › Vertical or horizontal exhaust
- › Airflow up to 14.500 m³/h
- › High-efficiency EC-fans.

KITCHEN FANS:

- › For extraction of polluted hot air
- › Airflow up to 15.100 m³/h
- › High motor protection class:
IP54/55

APPLICATION EXAMPLES



1. Industry
2. Warehouses
3. Bathrooms
4. Restaurants
5. Healthcare
6. Shopping centers
7. Fitness centers

RELIABILITY



10 years of operational time (40.000 working hours) for a wide range of fans.



3-step quality control.



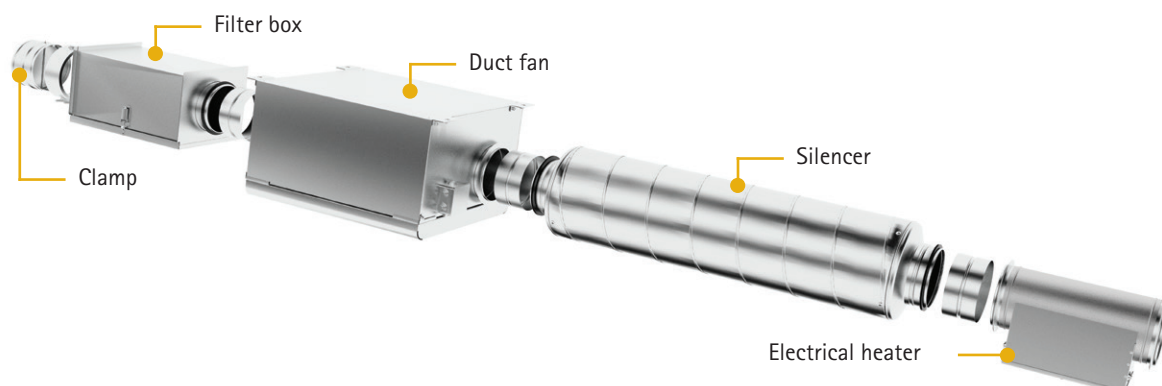
Long-term suppliers: EBM-PAPST, ZIEHL-ABEGG, Soler and Palau.



Maintenance-free bearings.

DUCT-, BOX FANS

Duct-, box fans are mostly used in low-to medium-pressure ducted systems with additional components such as heaters, filter boxes, dampers, etc.



VKA EKO

Circular duct fans

39-100 Duct fan VKA-125 EC
39-101 Duct fan VKA-160 EC
39-102 Duct fan VKA-200 EC

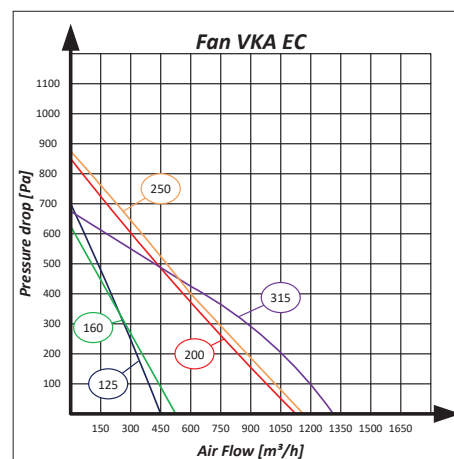
39-103 Duct fan VKA-250 EC
39-104 Duct fan VKA-315 EC



FEATURES:

- › Diameter: 125-315 mm
- › Airflow: up to 1.320 m³/h
- › Mounting positions: multiple
- › Backward-curved impeller
- › Power supply: 230V/50Hz/1f
- › Casing: galvanized sheet steel, powder coating
- › Location: indoors
- › Motor protection class: IP54
- › Temperature range*: -25° C to +60° C.

* - Depends on unit.



AKU EKO

Acoustically insulated box fans

39-110 Box fan AKU-125 EC
39-111 Box fan AKU-160 EC
39-112 Box fan AKU-200 EC

39-113 Box fan AKU-250 EC
39-114 Box fan AKU-315 EC
39-115 Box fan AKU-500x250 EC

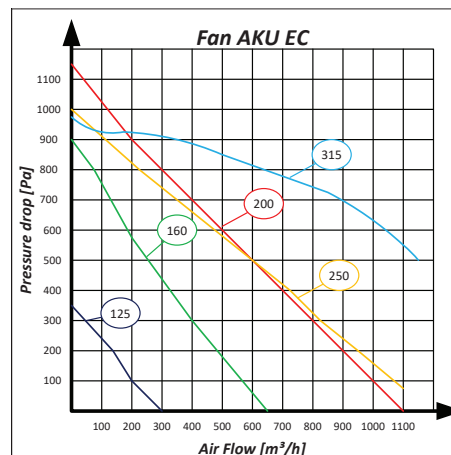
39-116 Box fan AKU-700x400 EC
39-117 Box fan AKU-700x400S EC



FEATURES:

- › Round or rectangular connection
- › Diameter: 125-315 mm/flange 500x250 mm - 700x400 mm
- › Airflow: up to 5.310 m³/h
- › Mounting positions: 3 positions
- › Backward-curved impeller
- › Power supply: 230V/50Hz/1f
- › Casing: galvanized sheet steel
- › Casing insulation: 50 mm
- › Location: indoors
- › Motor protection class: IP44/IP54
- › Temperature range*: -25° C to +60° C.

* - Depends on unit.



KUB EKO

Acoustically insulated rectangular box fans

39-120 Box fan KUB 50-355 EC
39-121 Box fan KUB 67-400 EC
39-122 Box fan KUB 67-500 EC

39-123 Box fan KUB 80-500 EC
39-124 Box fan KUB 80-560 EC
39-125 Box fan KUB 80-630 EC

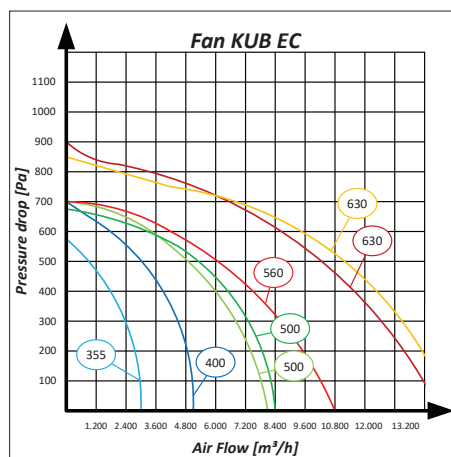
39-126 Box fan KUB 100-630 EC



FEATURES:

- › Edge length: 500-1000 mm
- › Flange diameter: 261-510 mm
- › Airflow: up to 15.900 m³/h
- › Mounting positions: 3 positions
- › Backward-curved impeller
- › Power supply: 230V/50Hz/1f or 400V/50Hz/3f
- › Casing: aluminum frame and galvanized steel walls
- › Casing insulation: 20 mm
- › Location: indoors/outdoors
- › Motor protection class: IP54
- › Temperature range*: -20° C to +60° C.

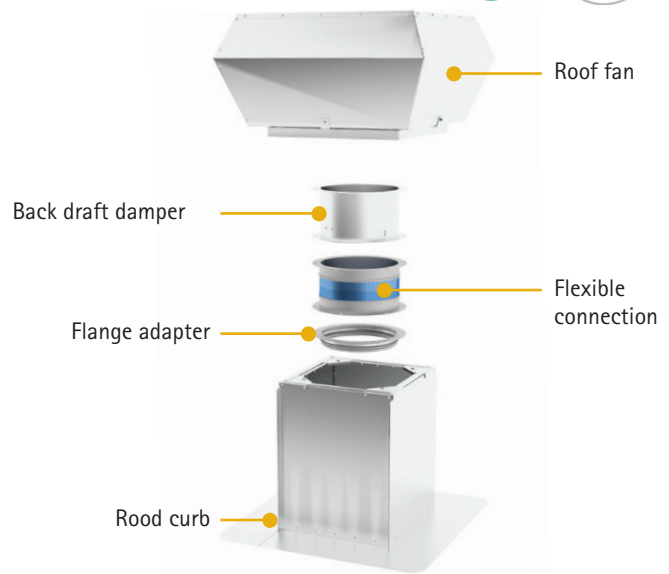
* - Depends on unit.



ROOF FANS



Roof fans are used to extract air in ventilation systems where the air has a low amount of impurities. Fan motors are protected from external objects. Roof fans are typically mounted with roof curbs and back-draft shutters. Demand control ventilation is available (for EC fans with 0-10V DC control) with Stouch controllers and CO₂/pressure sensors that regulate fan speed depending on CO₂ levels/pressure. EC fans (controlled via 0-10V DC signal) can also be connected directly to constant pressure sensors or on/off switches.



VSV/VSVI EKO

Vertical discharge roof fans

39-130 Roof Fans VSV-311-1 EC
39-131 Roof Fans VSV-355-1 EC
39-132 Roof Fans VSV-400-1 EC
39-133 Roof Fans VSV-450-3 EC

39-134 Roof Fans VSV-500-3 EC
39-135 Roof Fans VSV-560-3 EC
39-136 Roof Fans VSV-630-3 EC
39-140 Roof Fans VSVI-311-1 EC

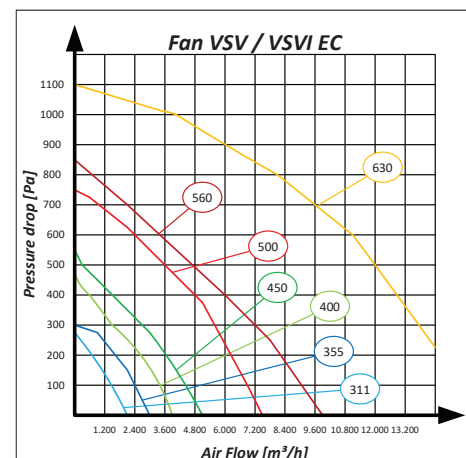
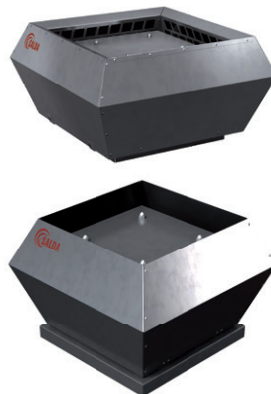
39-141 Roof Fans VSVI-355-1 EC
39-142 Roof Fans VSVI-400-1 EC
39-143 Roof Fans VSVI-450-3 EC
39-144 Roof Fans VSVI-500-3 EC

39-145 Roof Fans VSVI-560-3 EC
39-146 Roof Fans VSVI-630-3 EC

FEATURES:

- › Round and rectangular connection
- › Diameter: 125-315 mm/flange 500x250 mm - 700x400 mm
- › Airflow: up to 14.500 m³/h
- › Mounting positions: vertical
- › Backward-curved impeller
- › Power supply: 230V/50Hz/1f or 400V/50Hz/3f
- › Casing: galvanized sheet steel
- › Casing insulation: 50 mm (VSVI only)
- › Location: outdoors
- › Motor protection class: IP54
- › Temperature range*: -20° C to +60° C.

* - Depends on unit.



VSA EKO/VSA 3.0

Horizontal discharge roof fans

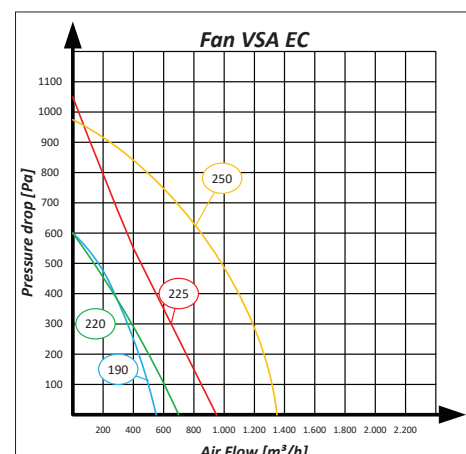
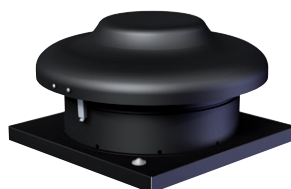
39-150 Roof Fans VSA-190-1 EC
39-151 Roof Fans VSA-220-1 EC
39-152 Roof Fans VSA-225-1 EC

39-153 Roof Fans VSA-250-1 EC

FEATURES:

- › Height: 207-315 mm
- › Diameter: 334-450 mm
- › Airflow: up to 1.350 m³/h
- › Mounting position: vertical
- › Backward-curved impeller
- › Power supply: 230V/50Hz/1f
- › Casing: galvanized sheet steel, powder coating
- › Location: outdoors
- › Motor protection class: IP44/IP54
- › Temperature range*: -40° C to +80° C.

* - Depends on unit.



ROOD CURB

Accessories for VSV/VSVI EKO and VSA EKO

39-200 Rood curb for VSA EC 250 39-203 Rood curb for VSV/VSVI 450-500
39-201 Rood curb for VSV/VSVI 311 39-204 Rood curb for VSV/VSVI 560-630
39-202 Rood curb for VSV/VSVI 355-400

FEATURES:

Mounting of Roof fan VSA EKO on flat roofs. Made of galvanized steel. Isolated with 50 mm. Powder coated painting RAL 9005.



FLANGE ADAPTER

Accessories for VSV/VSVI EKO and VSA EKO

39-210 Flange adapter 160 39-213 Flange adapter 355-500
39-211 Flange adapter 250 39-214 Flange adapter 560-630
39-212 Flange adapter 311

FEATURES:

Flange-adapters with sealing rubber used for the connection of roof fans VSV, VSVI and VSA to air ducts. Made of galvanized steel.



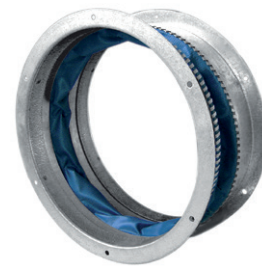
FLEXIBLE CONNECTION

Accessories for VSV/VSVI EKO and VSA EKO

39-220 Flexible connection ø160 mm 39-223 Flexible connection ø355-500 mm
39-221 Flexible connection ø250 mm 39-224 Flexible connection ø560-630 mm
39-222 Flexible connection ø311 mm

FEATURES:

Used for the minimizing of vibrations, produced for VSA EKO, and VSV, VSVI EKO fans. Made of galvanized steel.



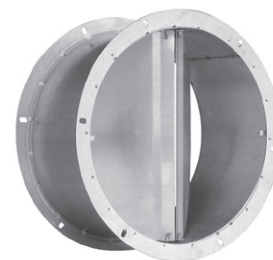
BACK DRAFT DAMPER

Accessories for VSV / VSVI EKO and VS EKO

39-230 Back draft damper ø160 mm 39-234 Back draft damper ø355-500 mm
39-231 Back draft damper ø250 mm
39-232 Back draft damper ø311 mm

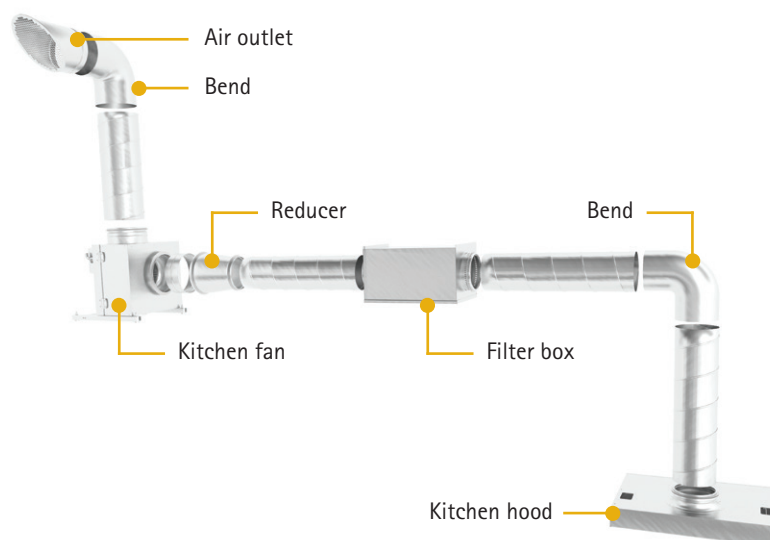
FEATURES:

The housing is made of galvanized steel, the blades are made of aluminium. The dampers can be installed in vertical air exhaust ducts with VSV, VSVI EKO and VSA EKO fans only.



KITCHEN FANS

Kitchen fans are used to extract air in ventilation systems where the air is up to 120° C and has higher levels of humidity and impurities like grease. These fans' motors have higher protection class of IP54. Units are equipped with easily removable grease trays and are service friendly.



KF T120 EC*

Kitchen fans

39-160 Kitchen fans KF-B-315 EC
39-161 Kitchen fans KF-B-355 EC
39-162 Kitchen fans KF-B-400 EC

39-163 Kitchen fans KF-F-160 EC
39-164 Kitchen fans KF-F-180 EC
39-165 Kitchen fans KF-F-200 EC

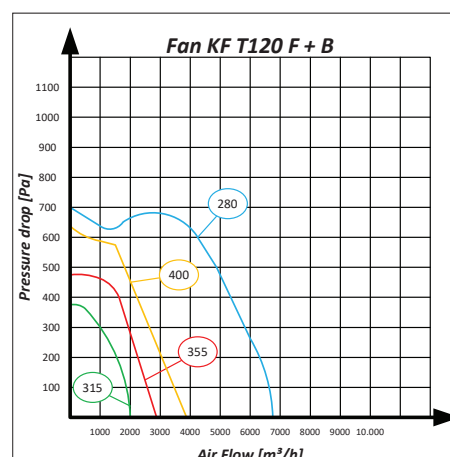
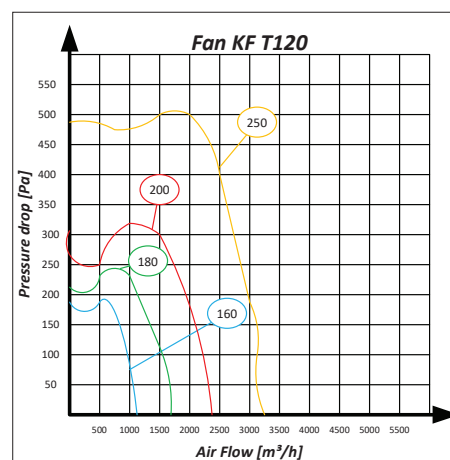
39-166 Kitchen fans KF-F-250 EC
39-167 Kitchen fans KF-F-280 EC

NEW



FEATURES:

- › Flange diameter: 200-400 mm
- › Airflow: up to 6.660 m³/h
- › Mounting position: vertical
- › Forward or backward-curved impeller
- › Power supply: 230V/50Hz/1f or 400V/50Hz/3f
- › Casing: galvanized sheet steel
- › Casing insulation: 50 mm
- › Drain connection: stainless steel
- › Anti-vibration pads: included
- › Location: indoors/outdoors
- › Motor protection class: IP55**
- › Temperature range***: -25° C to +60° C.



* - fans for transporting gases hotter than 100° C are not subject to ErP regulations.

** - KF-T120 F 160 EC IP44.

*** - Depends on unit.

KF T120*

Kitchen fans

39-180 Kitchen fans KF-160-3
39-181 Kitchen fans KF-180-3
39-182 Kitchen fans KF-200-3

39-183 Kitchen fans KF-225-3
39-184 Kitchen fans KF-250-3
39-185 Kitchen fans KF-280-3

39-186 Kitchen fans KF-315-3
39-187 Kitchen fans KF-355-3

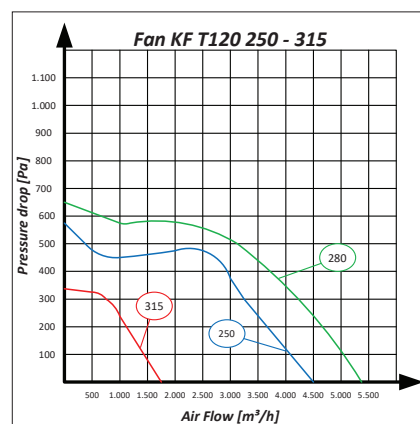
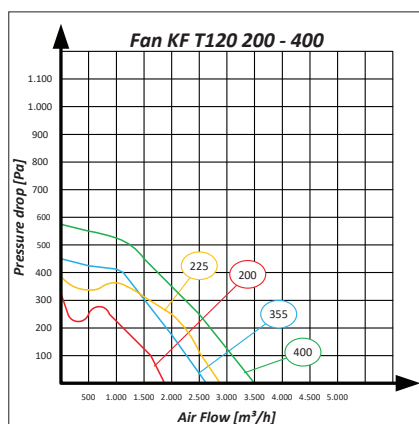
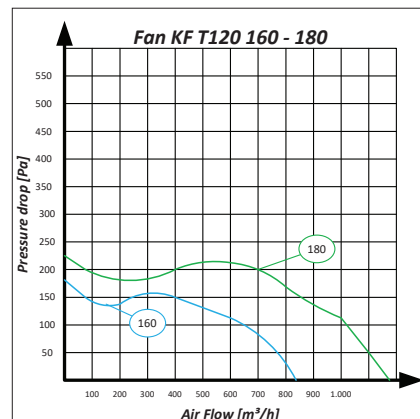
Can be controlled by frequency inverter

FEATURES:

- › Flange diameter: 200-400 mm
- › Airflow: up to 5.230 m³/h
- › Mounting position: vertical
- › Forward or backward-curved impeller
- › Power supply: 400V/50Hz/3f
- › Casing: galvanized sheet steel
- › Casing insulation: 50 mm
- › Anti-vibration pads: included
- › Location: indoors/outdoors
- › Motor protection class: IP54
- › Temperature range: -40° C to +40° C.



* - fans for transporting gases hotter than 100° C are not subject to ErP regulations.



KUB T120*

Kitchen fans

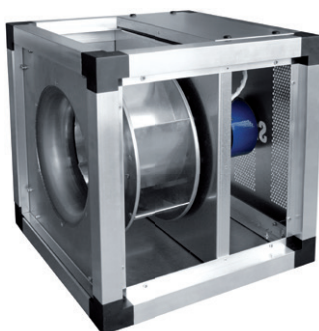
39-170 Kitchen fans KUB-355-3
39-171 Kitchen fans KUB-400-3
39-172 Kitchen fans KUB-450-3

39-173 Kitchen fans KUB-500-3
39-174 Kitchen fans KUB-560-3
39-175 Kitchen fans KUB-630-3

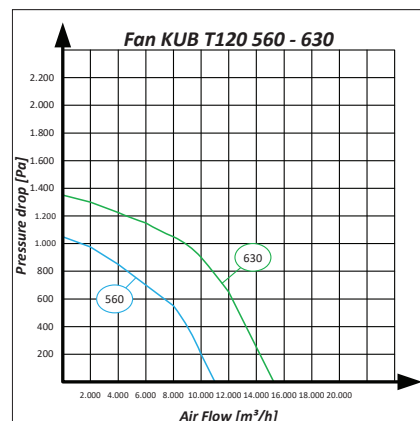
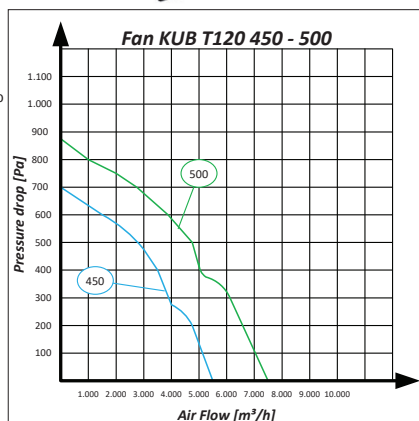
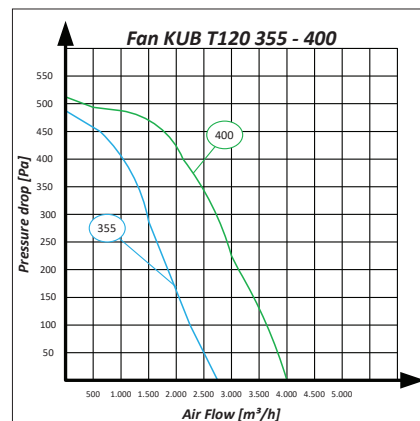
Can be controlled by frequency inverter

FEATURES:

- › Edge length: 500-865 mm
- › Flange diameter: 355-630 mm
- › Airflow: up to 15.100 m³/h
- › Mounting positions: 3 positions
- › Backward-curved impeller
- › Power supply: 400V/50Hz/3f
- › Casing: aluminum frame, galvanized steel panels
- › Casing insulation: 20 mm
- › Condensate tray: stainless steel
- › Location: indoors/outdoors
- › Motor protection class: IP55
- › Temperature range: -40° C to +40° C.



* - fans for transporting gases hotter than 100° C are not subject to ErP regulations.



EC-FANS

FOR HIGHER SAVINGS

EC fans are implemented in the full range of Salda products. Products with EC fans have exceptional reliability, energy savings and extensive control options:

- › Integrated power electronics: motor speed control
- › Integrated motor protection: overheating, overloading, locked rotors, soft starts/stops
- › Continuous speed control via 0-10V signal or MODBUS*
- › Outstanding efficiency: electricity savings of more than 20%.

* some fans require additional accessories.

FAN SPEED CONTROL OPTIONS AND CONTROLLERS

Product name	MTP010	S-Touch	10 kΩ potentiometer	External signal 0-10 VDC	Multibox
VKA EKO	✓	✓	✓	✓	✓
AKU EKO	✓	✓	✓	✓	✓
KUB EKO	✓	✓	✓	✓	✓
VSV/VSVI EKO	✓	✓	✓	✓	✓
VSA EKO	✓	✓	✓	✓	✓
KF T120 EC	✓	✓	✓	✓	✓
KUB T120					✓ *
KF T120					✓ *

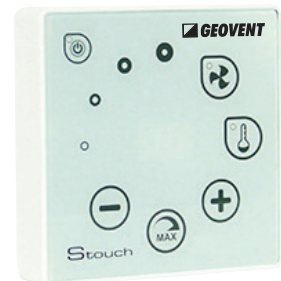
* Must have frequency inverters

S-TOUCH

S-touch controllers are specially designed to easily control our fans with EC-technology via 0-10V DC signal

FEATURES:

- › 4 configurable speeds (pressure or velocity indicated as a percentage)
- › Boost function
- › On/Off function
- › Display of fan speed
- › Display of warnings
- › Constant pressure control with external pressure sensor
- › CO₂ level control with external CO₂ sensor
- › Modbus master/slave modes
- › One-touch sensory control, sound response
- › LED indicators for 3 segments
- › Sleep mode
- › Switch off blocking
- › Child-proof lock



17-256 S-Touch

MTP010

0-10V speed controller

FEATURES:

- › Best solution for EC-fans control.
- › Intended for the devices with the input voltage of 0-10V output voltage of +10V.
- › Desired voltage output can be set from 0V up to 10V using the rotating knob.
- › Additional function for ON and OFF.
- › The moisture resistant casing.



97-002 MTP010 speed controller

Multibox III

For units with damper and/or EC-Fans with frequency inverters.
Can also regulate an EC-Fans

FEATURES:

- › Speed regulation of fan with frequency inverter through an analog 0-10V DC signal
- › 0-10V DC signal to control the external supply air fan for balanced air exchange
- › Control of 24V moto damper



13-700 Multibox III



GEOVENT

Hovedgaden 86 - DK-8831 Løgstrup - Denmark
Tlf.: (+45) 8664 2211 - salg@geovent.dk - www.geovent.com